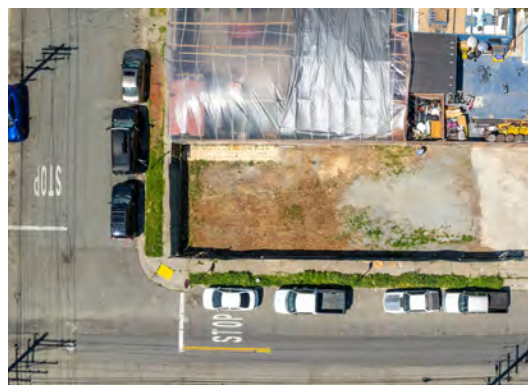




SEQUOIA

REAL ESTATE



CHANSLOR AVENUE, RICHMOND

OFFERED AT \$125,000

www.Chanslor-Lot.com

CHANSLOR AVENUE, RICHMOND

This is a listing for a large corner lot in the Iron Triangle district of Richmond. On the corner of Chanslor and Second Street, the lot is 3,390 square feet and zoned R-1 for residential.

The seller has completed a survey and proposed plans for a 2-story single-family home with an accessory dwelling unit. The address is close to Atchison Village and the Richmond Greenway, with easy access to Richmond Parkway and the 580 freeway.

Buyer will verify all information, lot permits, planning, and zoning with the City of Richmond and Contra Costa County.

HIGHLIGHTS

- Desirable Large Corner Lot
- Lot Size: 3,390 SqFt
- Conveniently Located
- Zoned R-1 for Residential
- Close to Atchison Village and Richmond Greenway

PRESENTED BY



THERESA CONTRERAS

Listing Agent

CA Lic. #01379010

510.932.2570

theresa@sequoia-re.com

www.sequoia-re.com/theresa



MARCIAL CONTRERAS

Listing Agent

CA Lic. #01378951

510.932.3500

Hablo Espanol

www.sequoia-re.com/marcial

