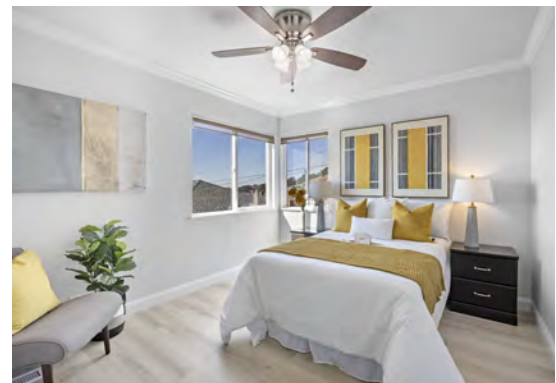




SEQUOIA

REAL ESTATE



15911 GRAMERCY DRIVE, SAN LEANDRO

OFFERED AT \$1,095,000

www.15911Gramercy.com

15911 GRAMERCY DRIVE, SAN LEANDRO

This stunning 4-bedroom, 2-bathroom residence offers an expansive 1,895 square feet of living space on an impressive 5,000 square foot corner lot. However, what truly sets this property apart are the breathtaking, unobstructed 180-degree panoramic Bay views that are nothing short of awe-inspiring.

Step inside and you'll be greeted by modern comforts, including fresh paint, recessed lights, and beautiful hardwood floors. The spacious living room sets the stage with its classic fireplace, promising cozy evenings while also serving as a mere prelude to the real star of the show – the dining room. Here, you'll be spellbound by the sweeping Bay views that provide a stunning backdrop to your dining experience.

Beyond the dining room, an expansive redwood deck awaits, creating the perfect setting to savor your morning coffee or entertain guests in the presence of this remarkable scenic panorama. The gourmet kitchen is a chef's dream, featuring a breakfast bar, stainless steel appliances, and ample cabinet space to meet all your culinary needs. As you explore the hall, you'll find a full bath and three generously sized bedrooms, each equipped with a ceiling fan for added comfort.

Venturing to the lower level of this residence, you'll discover a spacious in-law unit with its own private entrance. This unit boasts a wet bar, a dining area, a bedroom with an attached den, and a full bathroom. Completing this outstanding property is a 2-car tandem garage that provides additional storage space and a washer and dryer for added convenience. The newly landscaped backyard opens up a world of possibilities, offering a paved area and ample space to create your own personal dream oasis.

Centrally located, this home is a mere 10-minute drive from downtown San Leandro and conveniently situated near the BayFair Center. This shopping hub hosts popular retailers such as Target and Lucky Supermarket and is the site of the bustling San Leandro Farmers' Market held every Saturday. Outdoor enthusiasts will relish the proximity to Lake Chabot Regional Park for hiking adventures and Fairmont Terrace Park, which offers a playground, picnic areas, and a basketball court for recreational enjoyment. Commuters will appreciate being less than 2 miles from the Bay Fair Bart station, with easy access to major highways 238, 580, and 880. Don't miss the chance to make this unparalleled property with its extraordinary Bay views your new home sweet home.

HIGHLIGHTS

- 4 beds/2 baths
- Living Space: 1,895 SqFt
- Lot Size: 5,400 SqFt
- Fresh Exterior Paint
- Beautiful Hardwood Floors
- Gourmet Kitchen w/Breakfast Bar
- Expansive Redwood Deck
- Spacious In-Law Unit w/Private Entrance

PRESENTED BY



FRED MENG

Listing Agent

CA Lic. #01481286

415.828.1205

fred@sq-re.com

www.sequoia-re.com/fred



VICTOR LEUNG

Listing Agent

CA Lic. #02134056

415.216.5196

victor@sq-re.com

www.sequoia-re.com/victor

